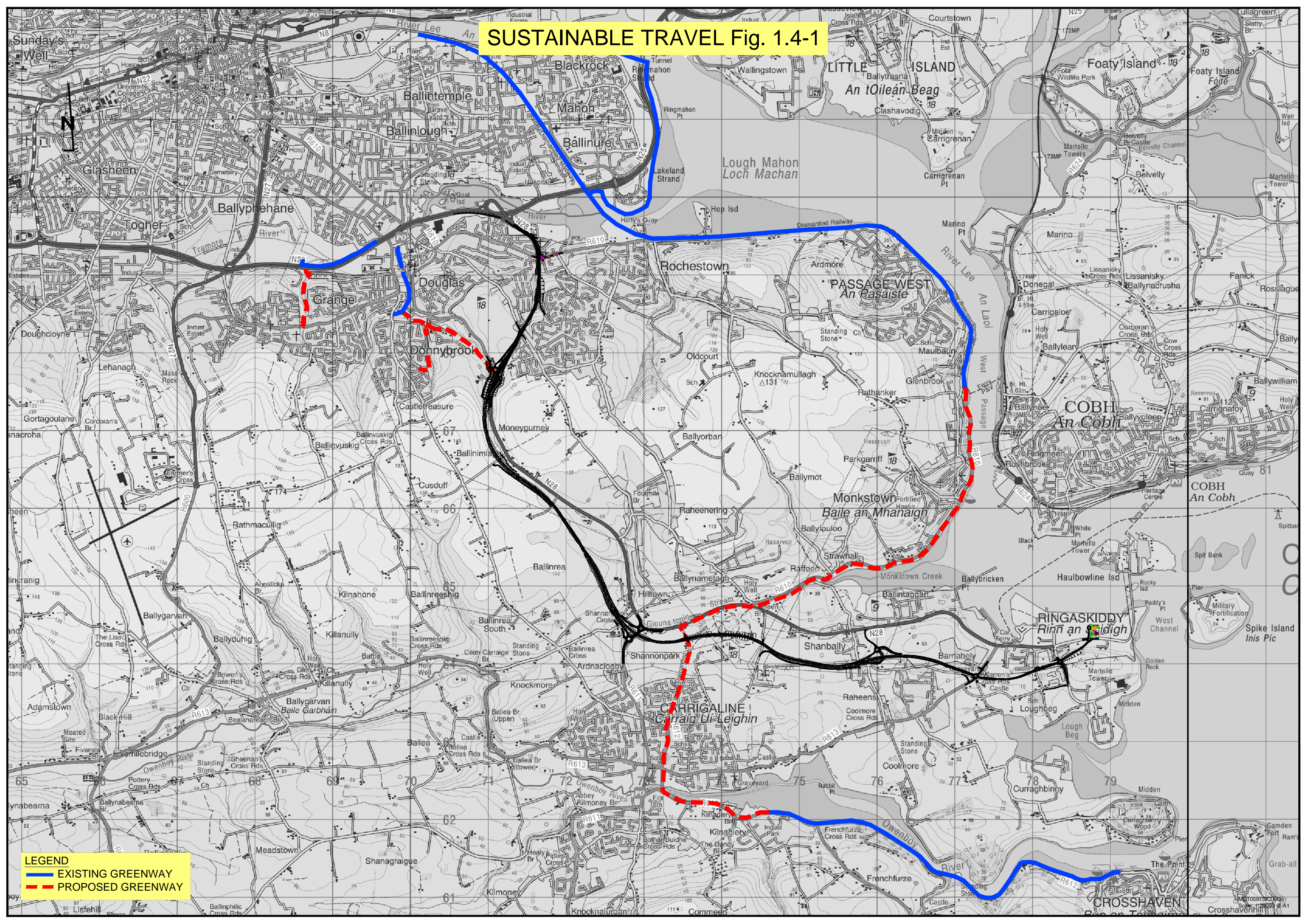
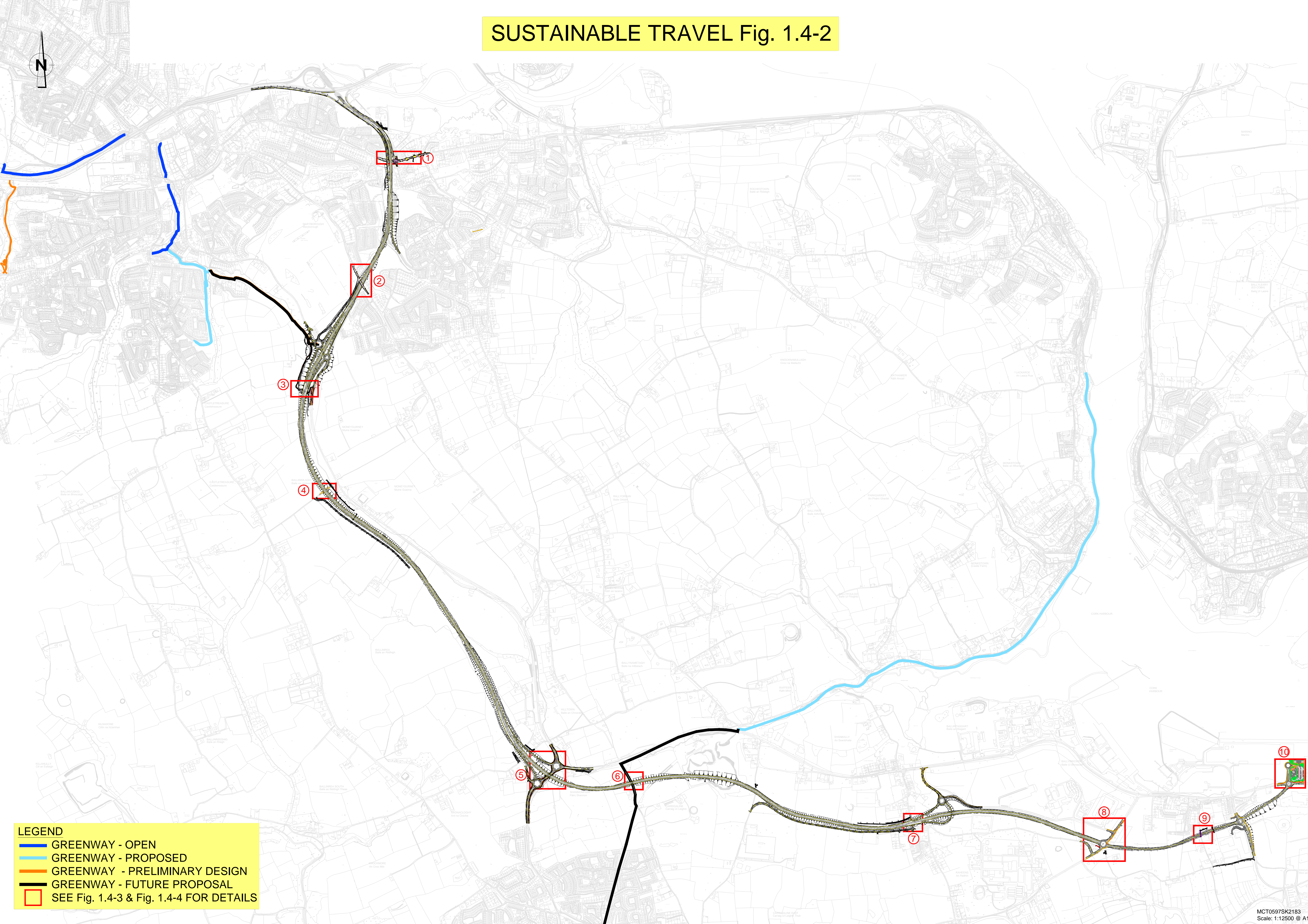


SUSTAINABLE TRAVEL Fig. 1.4-1



LEGEND
— EXISTING GREENWAY
- - - PROPOSED GREENWAY

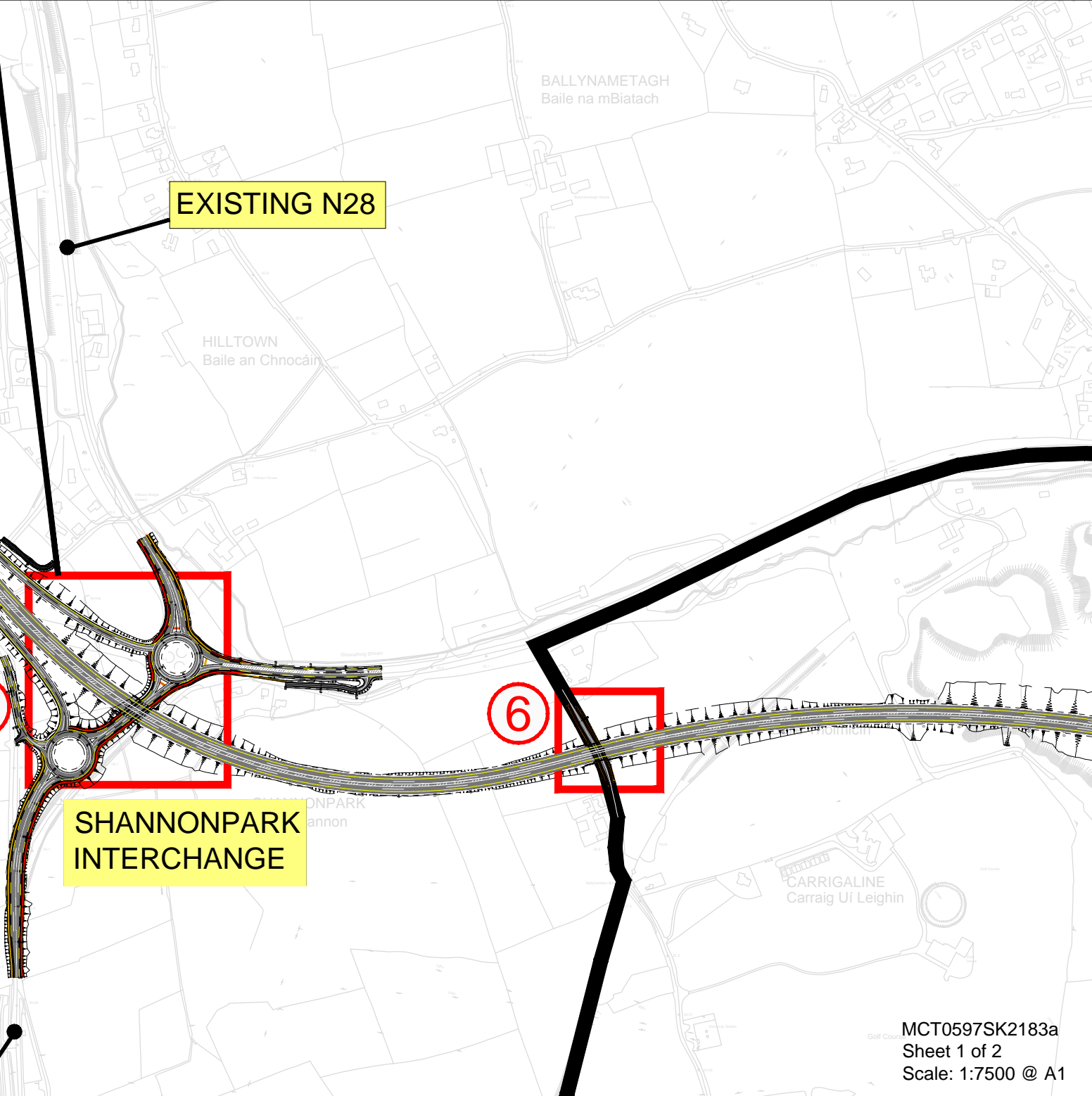
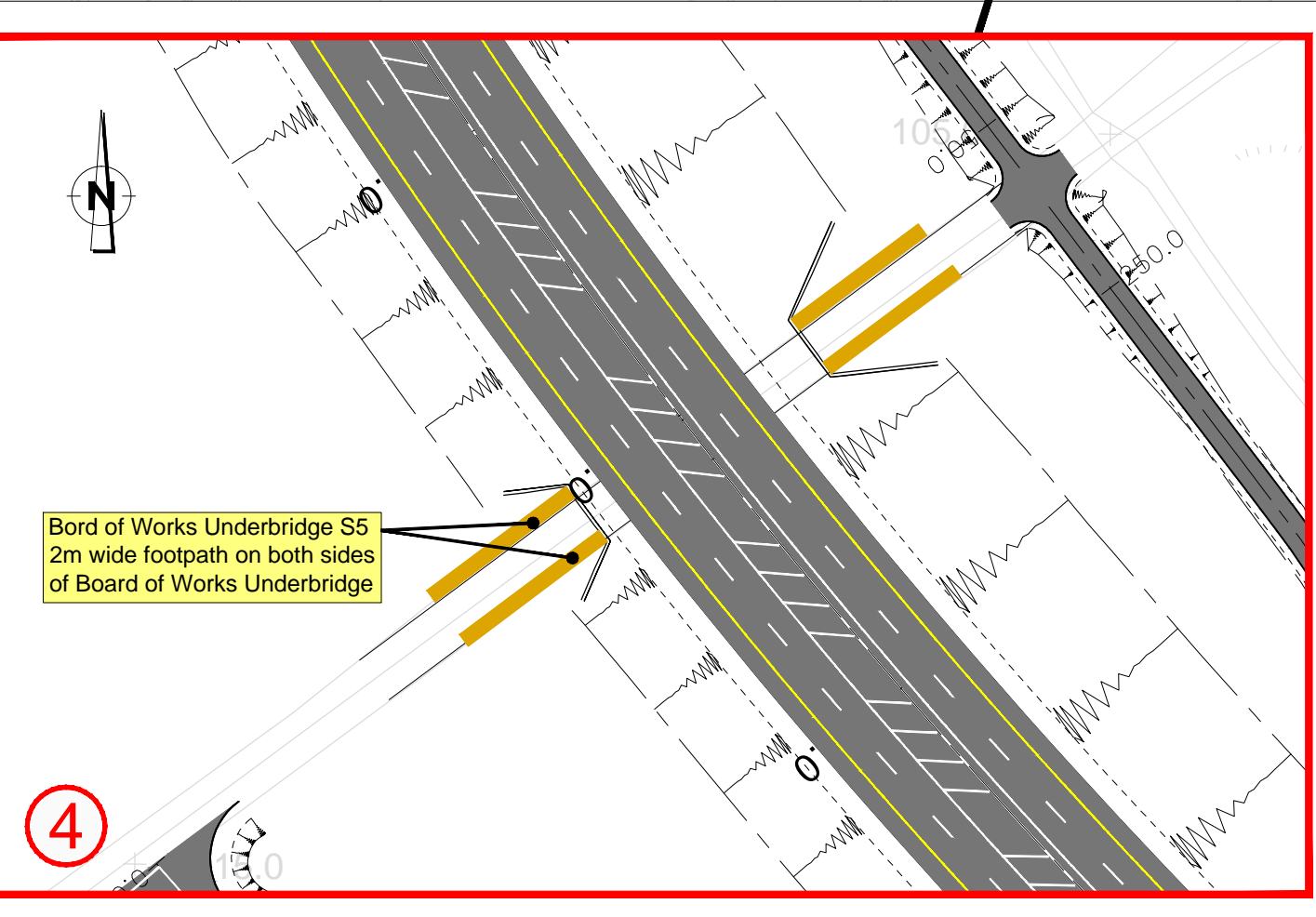
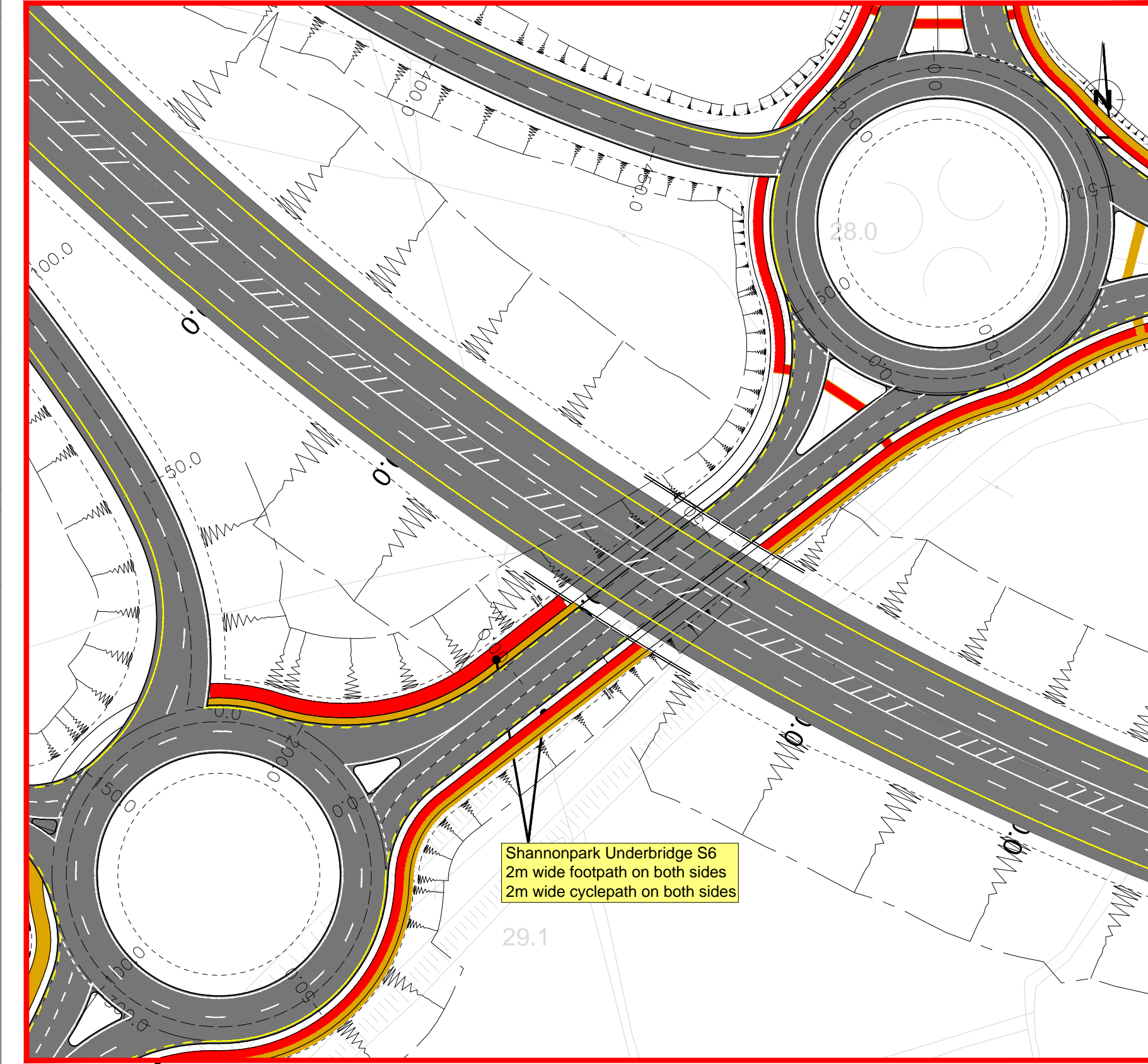
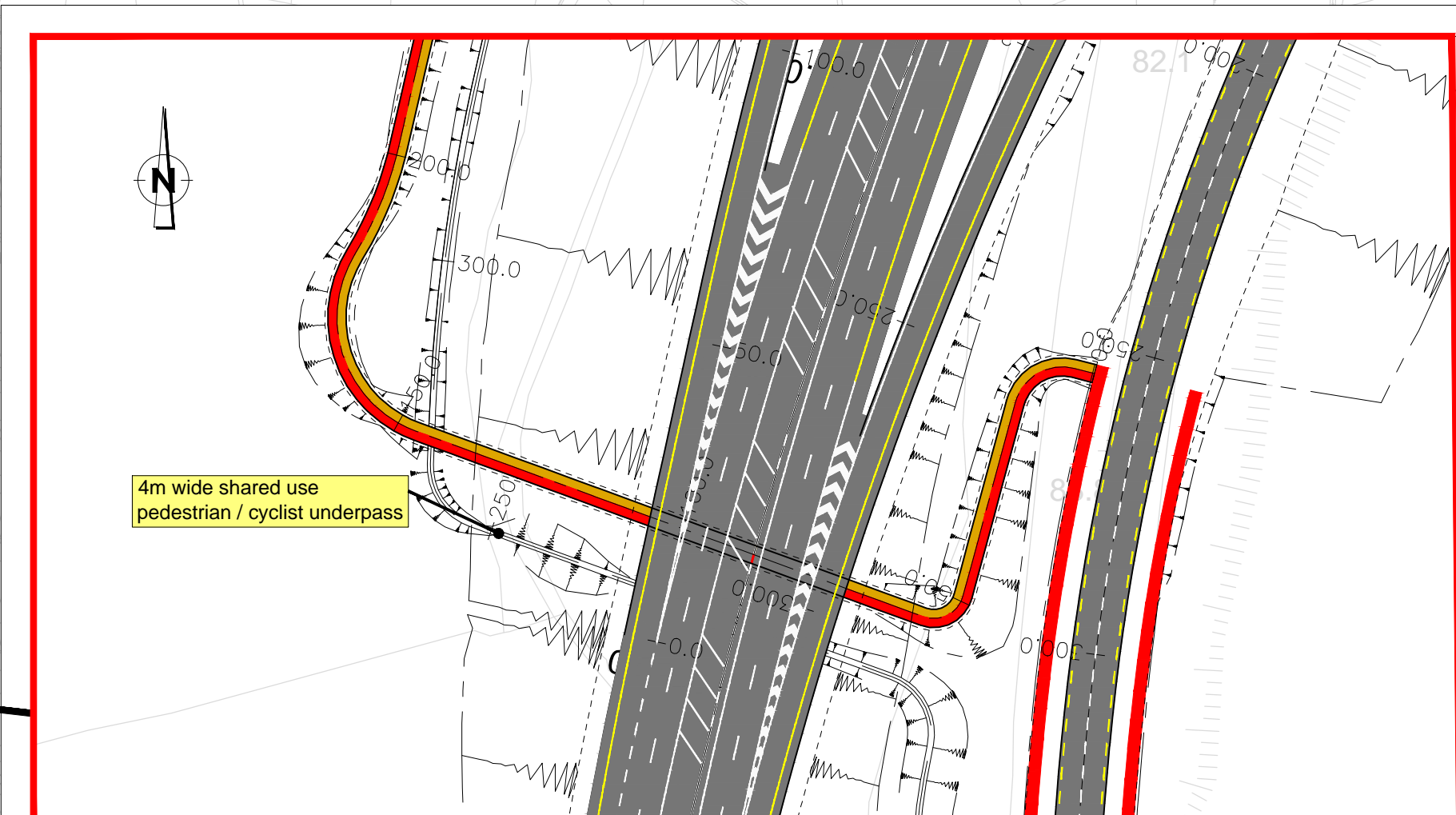
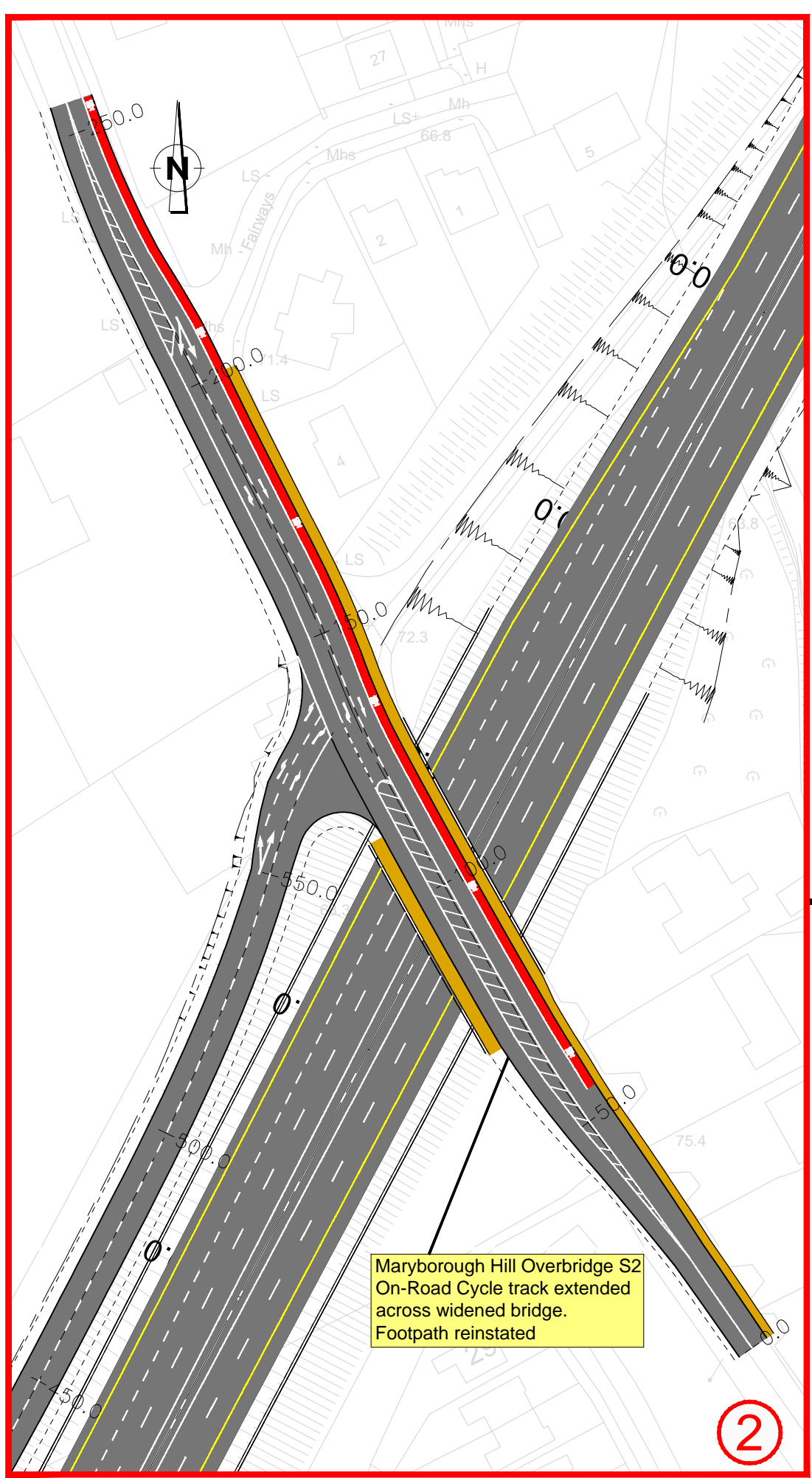
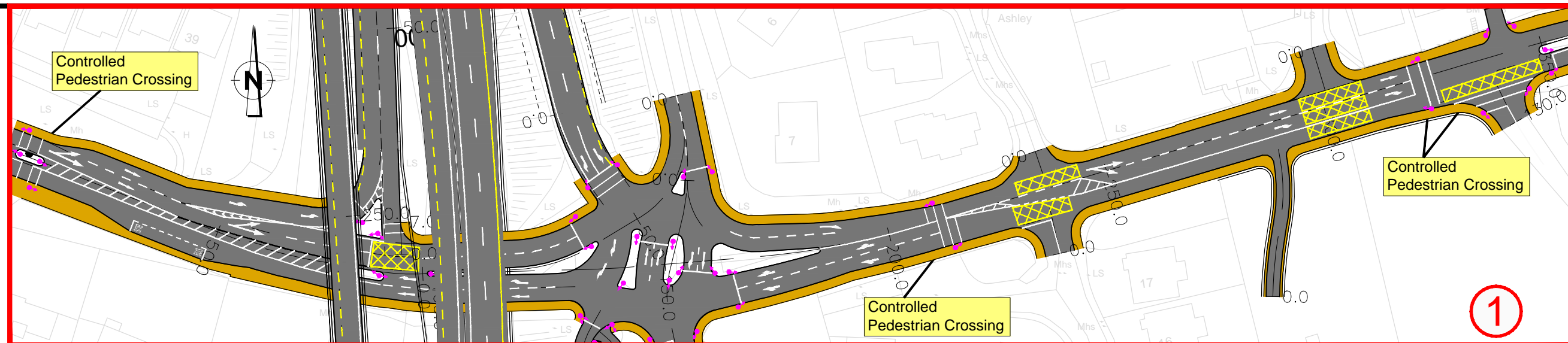
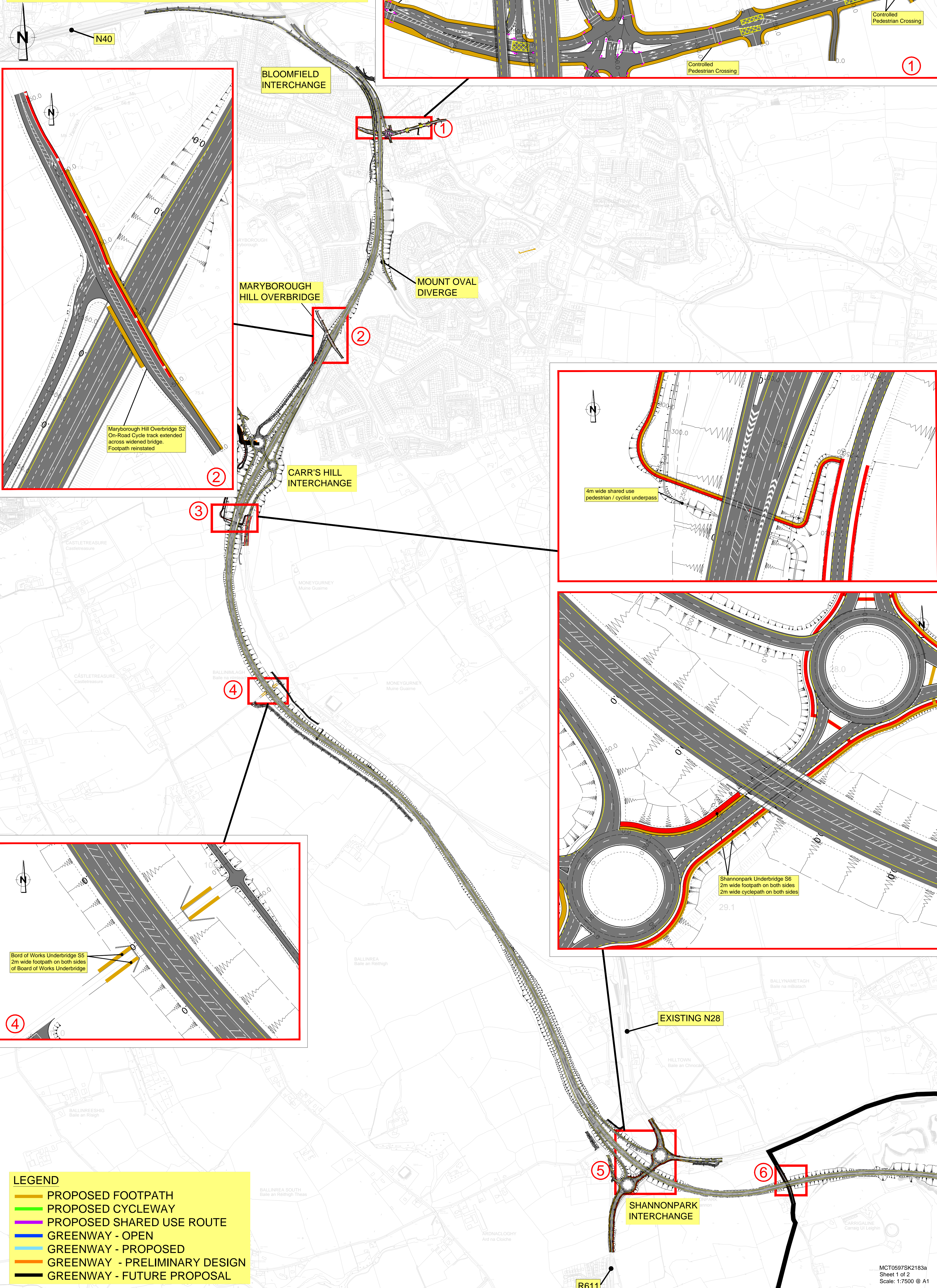
SUSTAINABLE TRAVEL Fig. 1.4-2



LEGEND

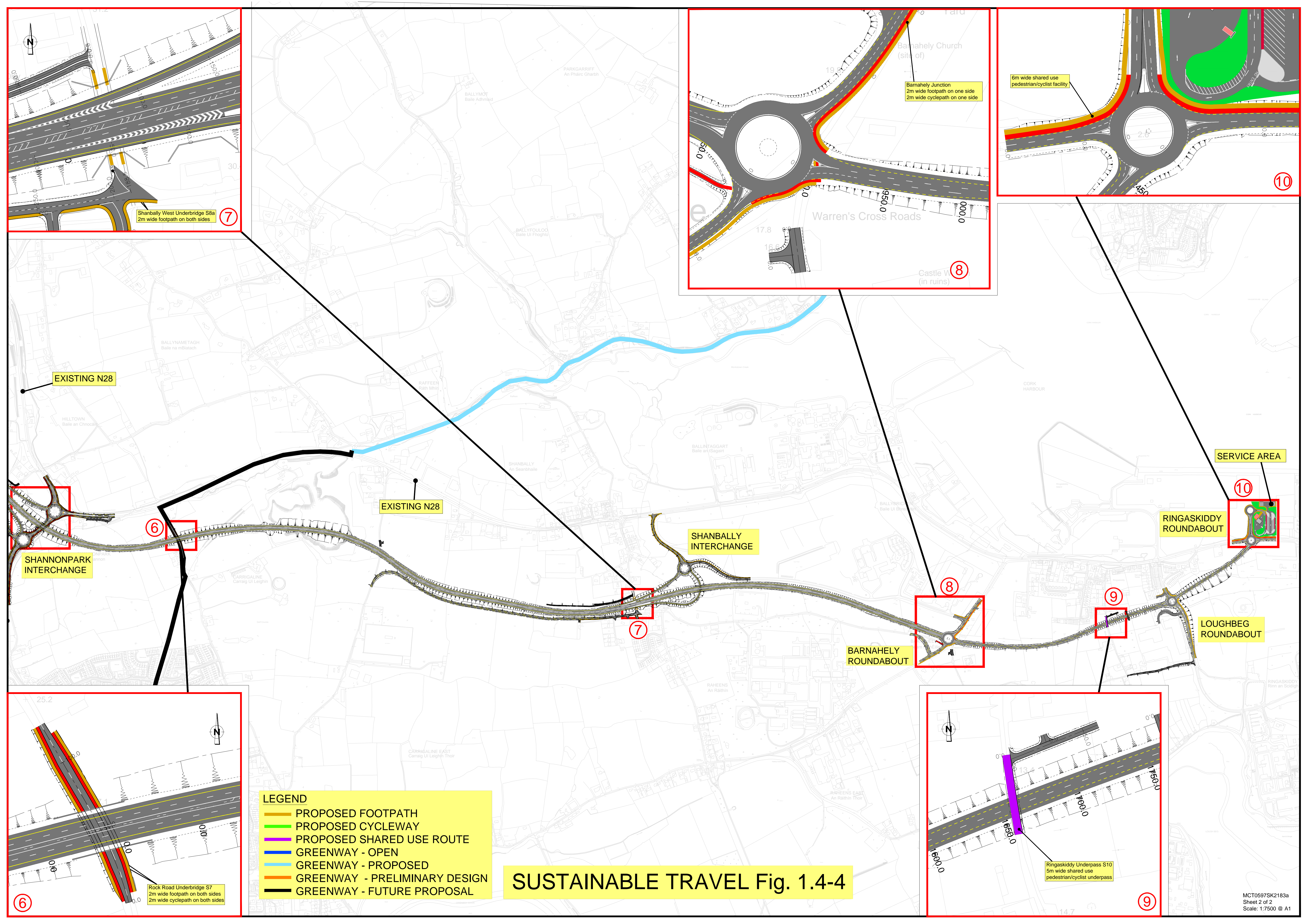
- GREENWAY - OPEN
- GREENWAY - PROPOSED
- GREENWAY - PRELIMINARY DESIGN
- GREENWAY - FUTURE PROPOSAL
- SEE Fig. 1.4-3 & Fig. 1.4-4 FOR DETAILS

SUSTAINABLE TRAVEL Fig. 1.4-3



LEGEND

- PROPOSED FOOTPATH
- PROPOSED CYCLEWAY
- PROPOSED SHARED USE ROUTE
- GREENWAY - OPEN
- GREENWAY - PROPOSED
- GREENWAY - PRELIMINARY DESIGN
- GREENWAY - FUTURE PROPOSAL



7
Shanbally West Underbridge S8a
2m wide footpath on both sides

8
Barnahely Junction
2m wide footpath on one side
2m wide cyclepath on one side

10
6m wide shared use
pedestrian/cyclist facility

6
SHANNONPARK
INTERCHANGE

EXISTING N28

SHANBALLY
INTERCHANGE

SERVICE AREA

10
RINGASKIDDY
ROUNDBOUT

9
LOUGHBEG
ROUNDBOUT

8
BARNARELY
ROUNDBOUT

6
Rock Road Underbridge S7
2m wide footpath on both sides
2m wide cyclepath on both sides

9
Ringaskiddy Underpass S10
5m wide shared use
pedestrian/cyclist underpass

- LEGEND**
- PROPOSED FOOTPATH
 - PROPOSED CYCLEWAY
 - PROPOSED SHARED USE ROUTE
 - GREENWAY - OPEN
 - GREENWAY - PROPOSED
 - GREENWAY - PRELIMINARY DESIGN
 - GREENWAY - FUTURE PROPOSAL

SUSTAINABLE TRAVEL Fig. 1.4-4